



SmarterGlass

state-of-the-art display solutions

www.smarterglass.com
978 997 4104
sales@smarterglass.com



Approval

Customer : _____

DATE : Feb. 10. 2012

SAMSUNG TFT-LCD
MODEL : LTI460HN01

Any Modification of Specification is not allowed without SEC's Permission.

NOTE :

<i>Customer's Approval</i>		APPROVED BY	DATE
SIGNATURE	DATE	<i>Heo Jeongmin</i>	Feb. 10.2012
		PREPARED BY	DATE
		<i>ChangHee Hong</i>	Feb. 10.2011

Application Engineering Part, LCD Division

Samsung Electronics Co . , LTD.

Contents

Revision History	(3)
General Description	(4)
General Information	(4)
1. Absolute Maximum Ratings	(5)
2. Application information for DID (Digital Information Display)	(7)
3. Optical Characteristics	(8)
4. Electrical Characteristics	(11)
4.1 TFT LCD Module	
4.2 Back Light Unit	
4.3 LED DC DC converter	
5. Input Terminal Pin Assignment	(14)
5.1 LVDS Connector	
5.2 LED Input and Output Pin Configuration	
5.3 LED drive DC-DC converter Power sequence	
5.4 LVDS Interface	
5.5 Input Signals, Basic Display Colors and Gray Scale of Each Color	
6. Interface Timing	(19)
6.1 Timing Parameters (DE mode)	
6.2 Timing Diagrams of interface Signal (DE mode)	
6.3 Power ON/OFF Sequence	
7. Outline Dimension	(22)
8. Reliability	(24)
9. Packing	(25)
10. Marking & Others	(27)
11. General Precaution	(28)
11.1 Handling	
11.2 Storage	
11.3 Operation	
11.4 Operation Condition Guide	
11.5 Others	

*** Revision History**

Date	Rev. No	Page	Summary
Feb. 10. 2012	000	all	First issued for GA

General Description

Description

LTI460HN01 is a color active matrix liquid crystal display (LCD) that uses amorphous silicon TFT(Thin Film Transistor) as switching components. This model is composed of a TFT LCD panel, a driver circuit and a back light unit. The resolution of a 46.0" is 1920 x 1080 and this model can display up to 16.7 million colors with wide viewing angle of 89° or higher in all directions. This panel is intended to support applications to provide a excellent performance for Flat Panel Display such as Home-alone Multimedia TFT-LCD TV, Display terminals for AV application products, and Digital Information Display (DID).

Features

- RoHS compliance (Pb-free)
- High contrast ratio, High luminance
- SVA(Super Vertical Align) mode
- Wide viewing angle ($\pm 178^\circ$)
- FHD (1920 x 1080 pixels) resolution (16:9)
- Low power consumption
- Direct LED Backlight (640ea)
- DE(Data Enable) mode
- 2ch LVDS (Low Voltage Differential Signaling) interface
- Super narrow Bezel (Black Top Chassis)

General Information

Items	Specification	Unit	Note
Module Size	1023.98(W _{Typ}) x 578.57(H _{Typ})	mm	$\pm 1.3\text{mm}$
	39.6(D _{MAX})		Except Converter & Control
Weight	15,000(Max)	g	
Pixel Pitch	0.53025(H) x 0.53025(V)	mm	
Active Display Area	1018.08(H) x 572.67(V)	mm	
Surface Treatment	Haze 44% , Anti-Glare		
Display Colors	8 bit - 16.7M	colors	
Number of Pixels	1920 x 1080	pixel	
Pixel Arrangement	RGB Vertical Stripe		
Display Mode	Normally Black		
Luminance of White	700 (Typ.)	cd/m ²	

1. Absolute Maximum Ratings

If the condition exceeds maximum ratings, it can cause malfunction or unrecoverable damage to the device.

1.1 Environmental absolute Maximum Ratings

Item		Symbol	Min.	Max.	Unit	Note
Power Supply Voltage		V_{DD}	GND-0.5	13.2	V	(1)
Storage temperature		T_{STG}	-20	65	°C	(2)
Glass surface temperature (Operation)	Surface	$T_{SURFACE}$	0	50	°C	(2)

Note (1) $T_a = 25 \pm 2$ °C

(2) Temperature and relative humidity range are shown in the figure below.

- a. 90 % RH Max. ($T_a \leq 39$ °C)
- b. Relative Humidity is 90% or less. ($T_a > 39$ °C)
- c. No condensation

1.2 LED Unit absolute Maximum Ratings

Item	Symbol	Max.	Unit	Note
Operating Temperature Range	Top	-30 ~ 85	°C	-
Storage Temperature Range	TSTG	-40 ~ 100	°C	-
Junction Temperature	T_j	125	°C	-
Forward Current	I_f	180	mA	@LED Module (160 LEDs)
	I_{fp}	300	mA	@LED Module (160 LEDs) 10% Duty
Forward Voltage	V_f	149.6	V	@LED Module (160 LEDs) 25 °C
Thermal Resistance, Junction to PCB	$R_{th,JS}$	35	K/W	Junction to solder

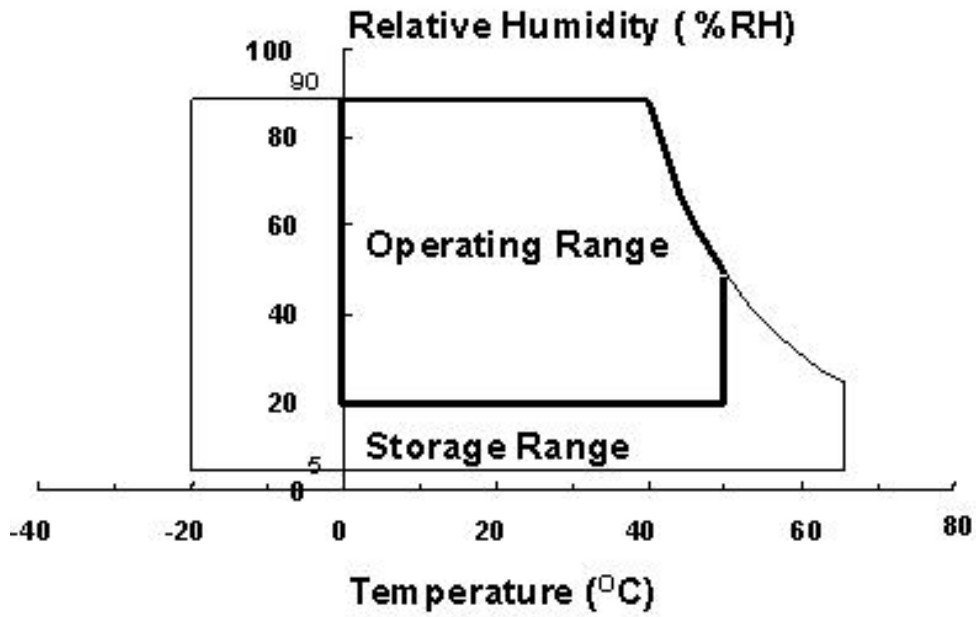


Fig. Temperature and Relative humidity range

2. Application information for DID (Digital Information Display)

A long-term display like DID application may cause uneven display including image retention. To optimize module's lifetime and function, several operating usages are required.

1. Normal operating condition

- Temperature: $20 \pm 15^{\circ}\text{C}$
- Humidity: $55 \pm 20\%$
- Display pattern: moving picture or regular switchover display

Note) Long-term static information image may cause uneven display.

2. Operating usages under abnormal operating condition. Note (1)

- a. Ambient condition
 - Well-ventilated place is recommended to set up DID system.
- b. Power off and screen saver
 - Periodical power-off or screen saver is needed after long-term static display. Note (2)

3. Operating usages to protect uneven display due to long-term static information display

- a. Suitable operating time for E-DID : under 20 hours a day.
- b. Periodical display contents change from static image to moving picture.
 - Liquid crystal refresh time is required.
- c. Periodical background color and character (image) color change
 - Use different colors for background and character (image), respectively.
 - Change colors periodically.
- d. Avoid combination of background and character with large different luminance.

Note (1) Abnormal condition means every operating condition except normal operating condition.

Note (2) Moving picture or black pattern is strongly recommended for screen saver.

4. Lifetime in this spec is guaranteed only when DID is used under right operating usages.

3. Optical Characteristics

The optical characteristics should be measured in a dark room or equivalent.
 Measuring equipment : BM-5A, TOPCON BM-7, SPECTRORADIOMETER SR-3

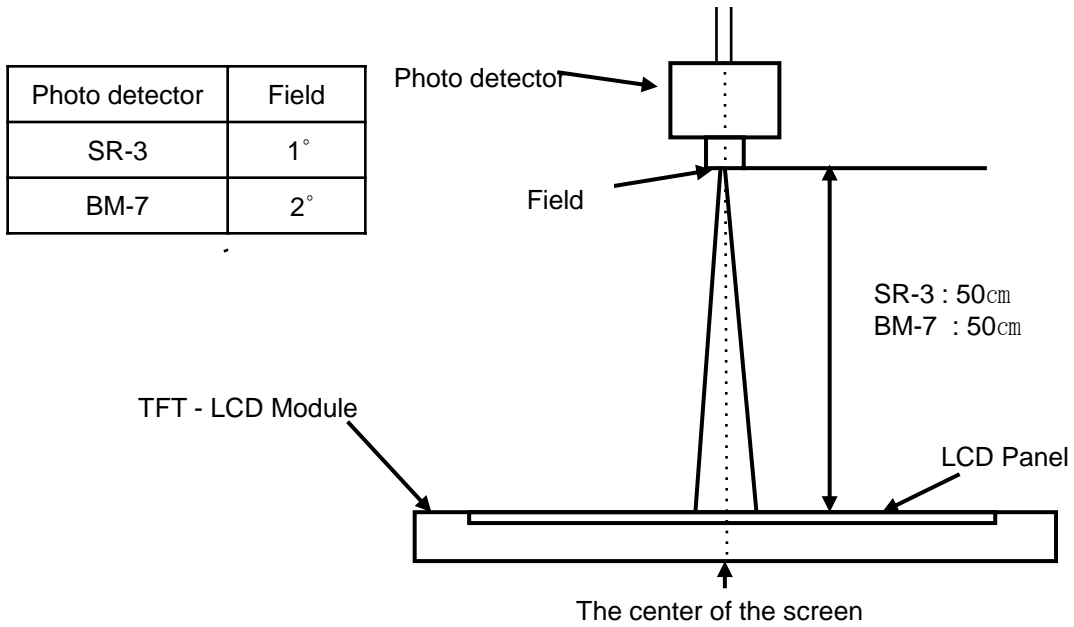
(Ta = 25 ± 2°C, VDD = 12V, fv = 60Hz, f_{DCLK} = 74.25MHz)

Item		Symbol	Condition	Min.	Typ.	Max.	Unit	Note
Contrast Ratio (Center of screen)		C/R	Normal f = 0 q = 0	2500	3500	-		(3) BM-5A
Response Time	G to G (AVG)	Tg		-	8	15	msec	(5) BM-7
Luminance of White (Center of screen)		Y _L		600	700	-	cd/m ²	(6) BM-5A
Color Chromaticity (CIE 1931)	Red	Rx	Viewing Angle	TYP. -0.03	0.646	TYP. +0.03		(7),(8) SR-3
		Ry			0.335			
	Green	Gx			0.310			
		Gy			0.597			
	Blue	Bx			0.151			
		By			0.068			
	White	Wx			0.280			
		Wy			0.290			
Color Gamut		-	-	72	-	%	(7) SR-3	
Color Temperature		-	-	10,000	-	K	(7) SR-3	
Viewing Angle	Hor.	θ _L	C/R ≥ 10:1	75	89	-	Degree	(8) SR-3
		θ _R		75	89	-		
	Ver.	θ _U		75	89	-		
		θ _D		75	89	-		
Brightness Uniformity (9 Points)		B _{uni}	-	-	25	%	(4) BM-5A	

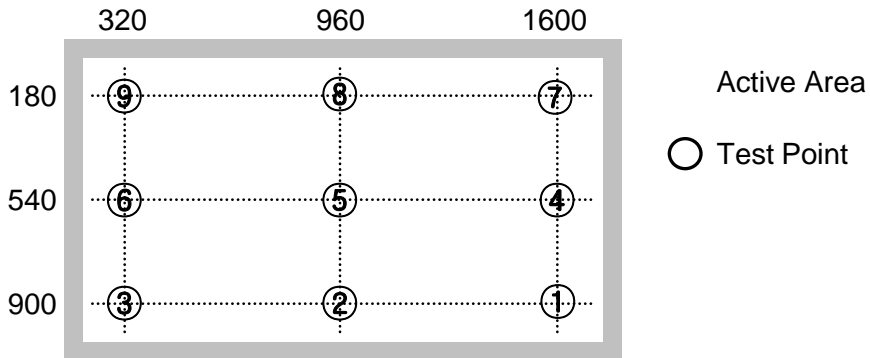
Note (1) Test Equipment Setup

The measurement should be executed in a stable, windless and dark room between 40min and 60min after lighting the backlight at the given temperature for stabilization of the backlight. This should be measured in the center of screen.

Environment condition : Ta = 25 ± 2 °C



Note (2) Definition of test point



Note (3) Definition of Contrast Ratio (C/R)

: Ratio of gray max (Gmax) & gray min (Gmin) at the center point ⑤ of the panel

$$C/R = \frac{G_{\max}}{G_{\min}}$$

Gmax : Luminance with all pixels white

Gmin : Luminance with all pixels black

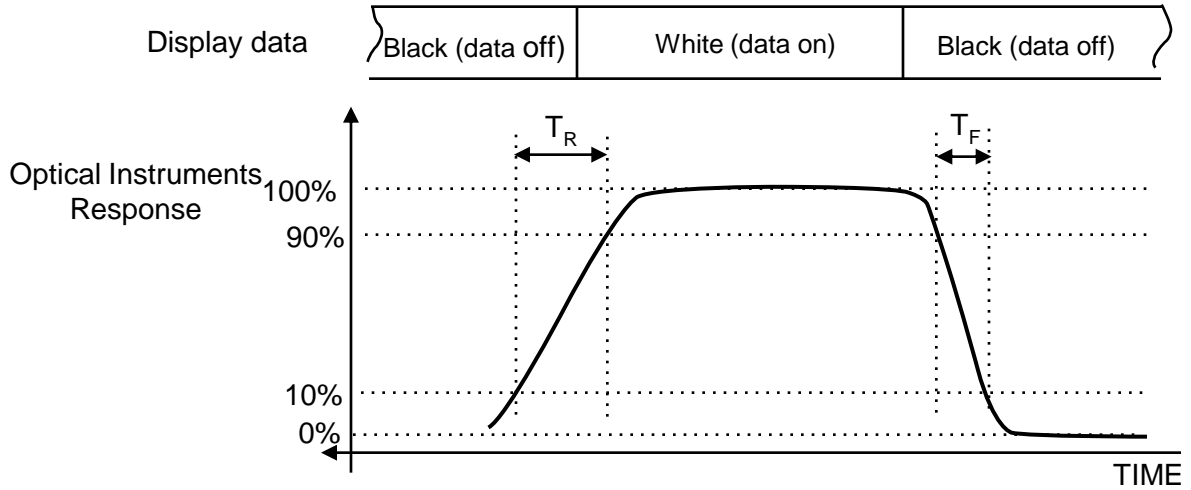
Note (4) Definition of 9 points brightness uniformity

$$B_{uni} = 100 * \frac{(B_{max} - B_{min})}{B_{max}}$$

Bmax : Maximum brightness

Bmin : Minimum brightness

Note (5) Definition of Response time : Average response time of all Gray to Gray except Tr, Tf



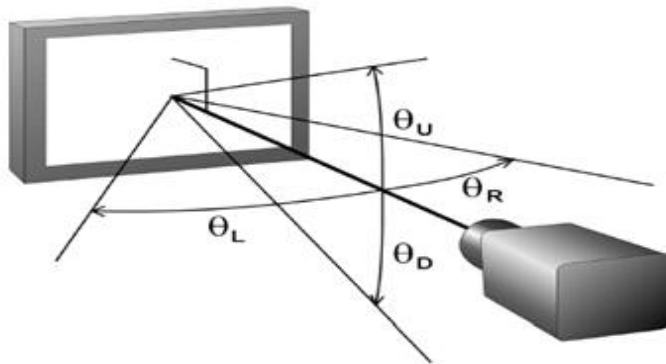
Note (6) Definition of Luminance of White : Luminance of white at center point ⑤

Note (7) Definition of Color Chromaticity (CIE 1931)

Color coordinate of Red, Green, Blue & White at center point ⑤

Note (8) Definition of Viewing Angle

: Viewing angle range (C/R ≥ 10)



4. Electrical Characteristics

4.1 TFT LCD Module

The connector for display data & timing signal should be connected.

Ta = 25°C ± 2 °C

Item	Symbol	Min.	Typ.	Max.	Unit	Note
Voltage of Power Supply	V _{DD}	10.8	12.0	13.2	V	(1)
Current of Power Supply	(a) Black	-	0.5	0.6	A	(2),(3)
	(b) White	-	1.1	1.2	A	
	(c) Sub-V-Stripe	-	1.1	1.2	A	
Vsync Frequency	f _V	-	60	-	Hz	
Hsync Frequency	f _H	-	67.5	-	kHz	
Main Frequency	f _{DCLK}	-	148.5	-	MHz	
Rush Current	I _{RUSH}	-	-	7.0	A	(4)

Note (1) The ripple voltage should be controlled under 10% of V_{DD}. (V_{SS} = 0V)

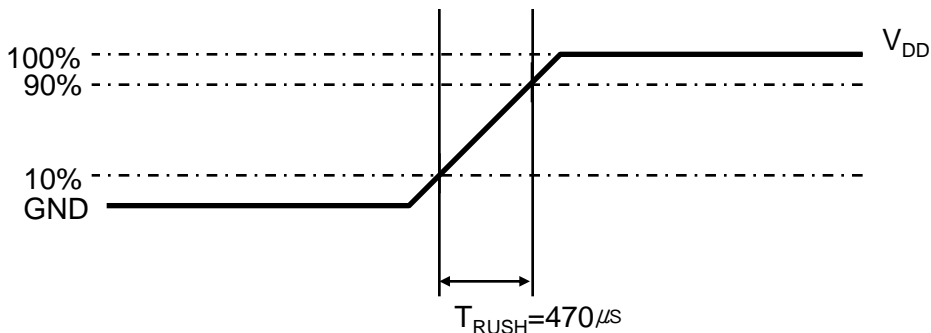
(2) f_V = 60Hz, f_{DCLK} = 74.25 MHz, V_{DD} = 12.0V, DC Current.
(without converter, Dot inversion Driving)

(3) Power dissipation check pattern (LCD Module only)

a) Black Pattern b) White Pattern c) Sub-V-Stripe



(4) Measurement Conditions



Rush Current I_{RUSH} can be measured when T_{RUSH} is 470μs.

4.2 Back Light Unit

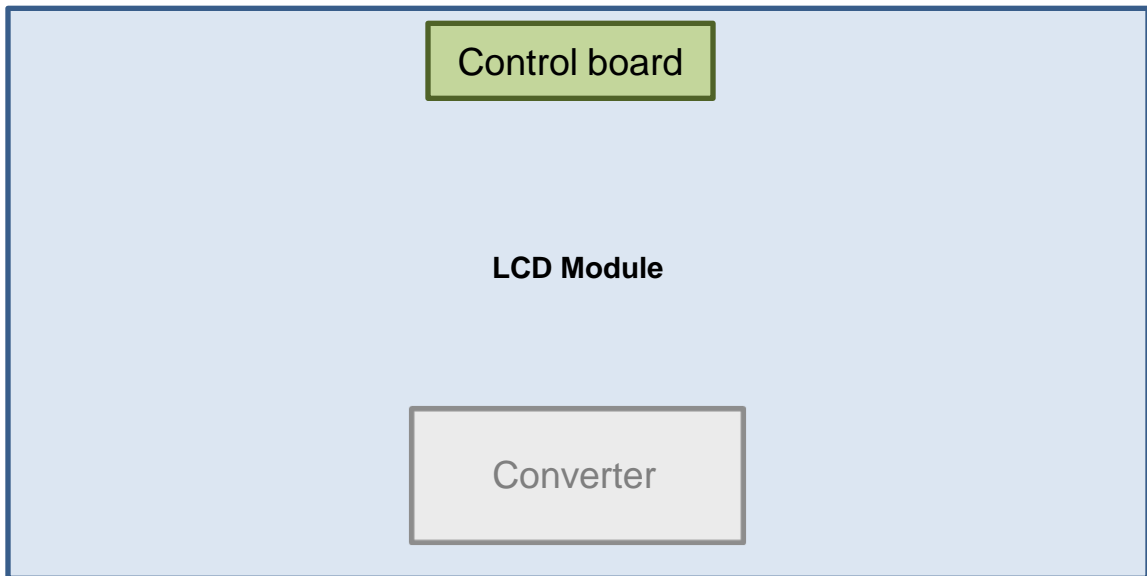
The backlight unit contains 640ea LEDs.

Ta=25 ± 2°C

Item	Symbol	Min.	Typ.	Max.	Unit	Note
Operating Life Time	Hr	50,000	-	-	Hour	(1)

Note (1) It is defined as the time to take until the brightness reduces to 50% of its original value.

[Operating condition : Ta = 25±2°C]



4.3 LED Drive DC-DC Converter

Items	Symbol	Conditions	Specifications			Unit	Note
			Min.	Typ.	Max.		
Input Voltage	V _{in}	-	22	24	26	V	Ta=25±2 °C
Input Current	I _{in}	V _{in} = 24.0V dim =Max	-	-	6.33	Adc	Initial turn on
Output Current	I _{LED}	V _{in} = 24.0V dim =Max	46.5	50	53.5	mArms	After 1 hour Warm-up
Operating frequency	f _{op}	V _{in} =22.0~26.0V dim=max	117	127	137	kHz	
Analog Dimming control	V _{dim}	V _{in} =22.0~26.0V	0	-	3.3	V	
	I _{out}	V _{in} =22.0~26.0V V _{dim} =3.3V	46.5	50	53.5	mA	
		V _{in} =22.0~26.0V V _{dim} =0V	6.5	9.5	12.5	mA	

Note (1) Power Consumption is measured at 700[cd/m²] of luminance condition which is the typical luminance value.

(2) All data was approved after running 120 min

(3) I_{inrush} is measured within BLU on 10ms after leaving the BLU as it is at least 1hr or more at room temperature(25 °C)

※ Additional Appendix for supply current

Items	Symbol	Conditions	Specifications			Unit	ETC
			Min.	Typ.	Max.		
Input Current	I _{IN_overshoot}	V _{IN} =24V, DIM=3.3V (Within 1hr at LED ON)	-	5.24	5.38	Adc	Max Current during 1hr aging
	I _{IN_saturation}	V _{IN} =24V, DIM=3.3V (After 1hr Aging)	-	5.17	5.31	Adc	Saturation Current after 1hr aging

5. Input Terminal Pin Assignment

5.1 Input Signal & Power

Connector : FI-RE51S-HF (JAE)

Pin	Description		Pin	Description	
1	Vdd (12V)		26	Even LVDS Signal	RE[0]P
2	Vdd (12V)		27		RE[1]N
3	Vdd (12V)		28		RE[1]P
4	Vdd (12V)		29		RE[2]N
5	Vdd (12V)		30		RE[2]P
6	No connection		31		GND
7	GND		32		RECLK-
8	GND		33		RECLK+
9	GND		34		GND
10	Odd LVDS Signal	RO[0]N	35		RE[3]N
11		RO[0]P	36		RE[3]P
12		RO[1]N	37		No connection
13		RO[1]P	38		No connection
14		RO[2]N	39		GND
15		RO[2]P	40	No connection	NOTE1
16		GND	41	No connection	
17		ROCLK-	42	No connection	
18		ROCLK+	43	No connection	
19		GND	44	No connection	
20		RO[3]N	45	LVDS_SEL	NOTE2
21		RO[3]P	46	No connection	NOTE1
22		No connection	47	No connection	
23		No connection	48	No connection	
24	GND		49	No connection	
25	Even LVDS	RE[0]N	50	No connection	
			51	No connection	

Note(1) No Connection : These pins are only used for SAMSUNG internal purpose.

(2) LVDS Option : High (3.3V) → Normal LVDS format

: Low (GND) or Open (N.C) → JEIDA LVDS format

Sequence : On = VDD (T1) ≥ LVDS Option ≥ Interface Signal(T2)

Off = Interface Signal (T3) ≥ LVDS Option ≥ VDD

Note (3) LVDS Connector

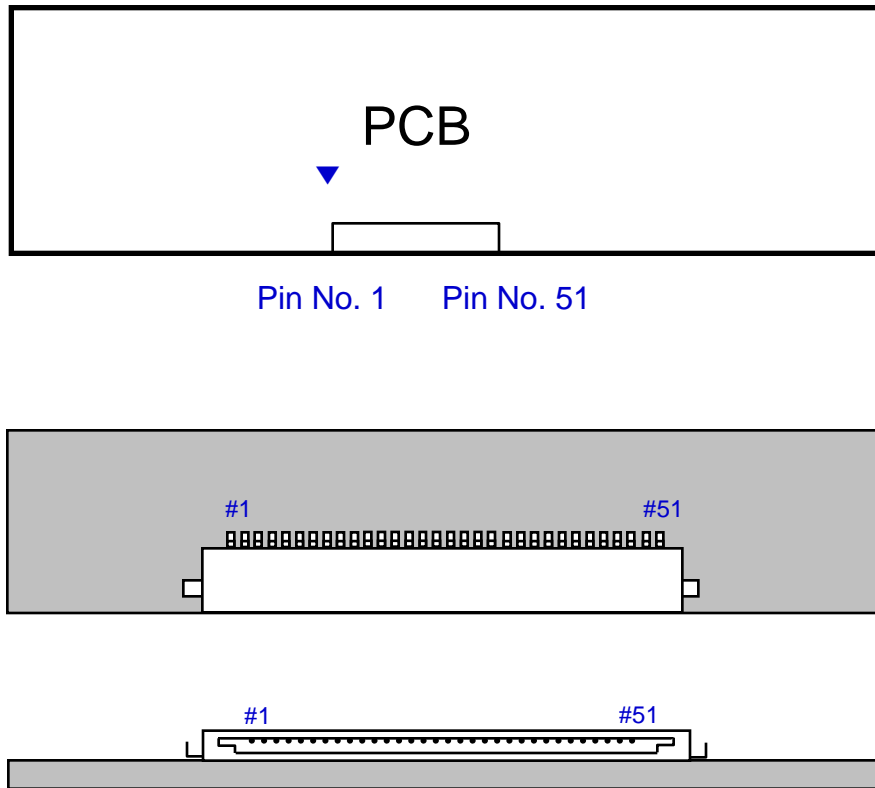


Fig. Connector diagram

- a. All GND pins should be connected together and also be connected to the LCD's metal chassis.
- b. All power input pins should be connected together.
- c. All N.C pins should be separated from other signal or power.

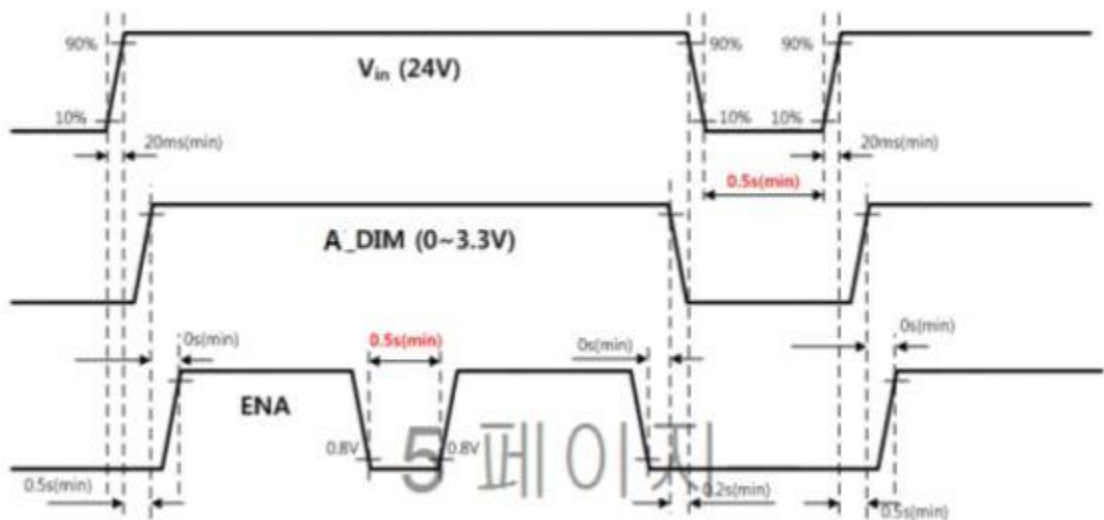
5.2 LED Converter input & output Pin Configuration

22022WR-014B1 (YEONHO)

Pin No.	Pin Configuration(FUNCTION)
1	V _{in} (24V)
2	V _{in} (24V)
3	V _{in} (24V)
4	V _{in} (24V)
5	V _{in} (24V)
6	GND
7	GND
8	GND
9	GND
10	GND
11	No Connection
12	ENA (Converter on/off Control signal)
13	Analog Dimming control [0V: Min, 3.3V: Max]
14	No Connection

Note) Pin 14 Must be disconnected from signal (No connection)

5.3 LED drive DC-DC converter Power Sequence



5.4 LVDS Interface

- LVDS Receiver : Tcon (merged)
- Data Format (JEIDA & Normal)

Default LVDS Option : JEIDA

	LVDS pin	JEIDA -DATA	VESA -DATA
TxOUT/RxIN0	TxIN/RxOUT0	R2	R0
	TxIN/RxOUT1	R3	R1
	TxIN/RxOUT2	R4	R2
	TxIN/RxOUT3	R5	R3
	TxIN/RxOUT4	R6	R4
	TxIN/RxOUT6	R7	R5
	TxIN/RxOUT7	G2	G0
TxOUT/RxIN1	TxIN/RxOUT8	G3	G1
	TxIN/RxOUT9	G4	G2
	TxIN/RxOUT12	G5	G3
	TxIN/RxOUT13	G6	G4
	TxIN/RxOUT14	G7	G5
	TxIN/RxOUT15	B2	B0
	TxIN/RxOUT18	B3	B1
TxOUT/RxIN2	TxIN/RxOUT19	B4	B2
	TxIN/RxOUT20	B5	B3
	TxIN/RxOUT21	B6	B4
	TxIN/RxOUT22	B7	B5
	TxIN/RxOUT24	HSYNC	HSYNC
	TxIN/RxOUT25	VSYNC	VSYNC
	TxIN/RxOUT26	DEN	DEN
TxOUT/RxIN3	TxIN/RxOUT27	R0	R6
	TxIN/RxOUT5	R1	R7
	TxIN/RxOUT10	G0	G6
	TxIN/RxOUT11	G1	G7
	TxIN/RxOUT16	B0	B6
	TxIN/RxOUT17	B1	B7
	TxIN/RxOUT23	RESERVED	RESERVED

5.5 Input Signals, Basic Display Colors and Gray Scale of Each Color

COLOR	DISPLAY (8bit)	DATA SIGNAL																					GRAY SCALE LEVEL			
		RED							GREEN							BLUE										
		R0	R1	R2	R3	R4	R5	R6	R7	G0	G1	G2	G3	G4	G5	G6	G7	B0	B1	B2	B3	B4		B5	B6	B7
BASIC COLOR	BLACK	0	0	0	0	0	0	0	0	0	0	0	0	0	0	0	0	0	0	0	0	0	0	0	0	-
	BLUE	0	0	0	0	0	0	0	0	0	0	0	0	0	0	0	0	1	1	1	1	1	1	1	1	-
	GREEN	0	0	0	0	0	0	0	0	1	1	1	1	1	1	1	1	0	0	0	0	0	0	0	0	-
	CYAN	0	0	0	0	0	0	0	0	1	1	1	1	1	1	1	1	1	1	1	1	1	1	1	1	-
	RED	1	1	1	1	1	1	1	1	0	0	0	0	0	0	0	0	0	0	0	0	0	0	0	0	-
	MAGENTA	1	1	1	1	1	1	1	1	0	0	0	0	0	0	0	0	1	1	1	1	1	1	1	1	-
	YELLOW	1	1	1	1	1	1	1	1	1	1	1	1	1	1	1	1	0	0	0	0	0	0	0	0	-
	WHITE	1	1	1	1	1	1	1	1	1	1	1	1	1	1	1	1	1	1	1	1	1	1	1	1	-
GRAY SCALE OF RED	BLACK	0	0	0	0	0	0	0	0	0	0	0	0	0	0	0	0	0	0	0	0	0	0	0	R0	
	DARK ↑	1	0	0	0	0	0	0	0	0	0	0	0	0	0	0	0	0	0	0	0	0	0	0	R1	
		0	1	0	0	0	0	0	0	0	0	0	0	0	0	0	0	0	0	0	0	0	0	0	R2	
		:	:	:	:	:	:	:	:	:	:	:	:	:	:	:	:	:	:	:	:	:	:	:	R3~R252	
		:	:	:	:	:	:	:	:	:	:	:	:	:	:	:	:	:	:	:	:	:	:	:		
	↓ LIGHT	1	0	1	1	1	1	1	1	0	0	0	0	0	0	0	0	0	0	0	0	0	0	0	R253	
		0	1	1	1	1	1	1	1	0	0	0	0	0	0	0	0	0	0	0	0	0	0	0	R254	
	RED	1	1	1	1	1	1	1	1	0	0	0	0	0	0	0	0	0	0	0	0	0	0	0	R255	
GRAY SCALE OF GREEN	BLACK	0	0	0	0	0	0	0	0	0	0	0	0	0	0	0	0	0	0	0	0	0	0	0	G0	
	DARK ↑	0	0	0	0	0	0	0	0	1	0	0	0	0	0	0	0	0	0	0	0	0	0	0	G1	
		0	0	0	0	0	0	0	0	0	1	0	0	0	0	0	0	0	0	0	0	0	0	0	G2	
		:	:	:	:	:	:	:	:	:	:	:	:	:	:	:	:	:	:	:	:	:	:	:	G3~G252	
		:	:	:	:	:	:	:	:	:	:	:	:	:	:	:	:	:	:	:	:	:	:	:		
	↓ LIGHT	0	0	0	0	0	0	0	0	1	0	1	1	1	1	1	1	0	0	0	0	0	0	0	G253	
		0	0	0	0	0	0	0	0	0	1	1	1	1	1	1	1	0	0	0	0	0	0	0	G254	
	GREEN	0	0	0	0	0	0	0	0	1	1	1	1	1	1	1	1	0	0	0	0	0	0	0	G255	
GRAY SCALE OF BLUE	BLACK	0	0	0	0	0	0	0	0	0	0	0	0	0	0	0	0	0	0	0	0	0	0	0	B0	
	DARK ↑	0	0	0	0	0	0	0	0	0	0	0	0	0	0	0	0	1	0	0	0	0	0	0	B1	
		0	0	0	0	0	0	0	0	0	0	0	0	0	0	0	0	0	1	0	0	0	0	0	B2	
		:	:	:	:	:	:	:	:	:	:	:	:	:	:	:	:	:	:	:	:	:	:	:	B3~B252	
		:	:	:	:	:	:	:	:	:	:	:	:	:	:	:	:	:	:	:	:	:	:	:		
	↓ LIGHT	0	0	0	0	0	0	0	0	0	0	0	0	0	0	0	0	1	0	1	1	1	1	1	B253	
		0	0	0	0	0	0	0	0	0	0	0	0	0	0	0	0	0	1	1	1	1	1	1	B254	
	BLUE	0	0	0	0	0	0	0	0	0	0	0	0	0	0	0	0	1	1	1	1	1	1	1	B255	

Note) Definition of Gray :

Rn : Red Gray, Gn : Green Gray, Bn : Blue Gray (n = Gray level)

Input Signal : 0 = Low level voltage, 1 = High level voltage

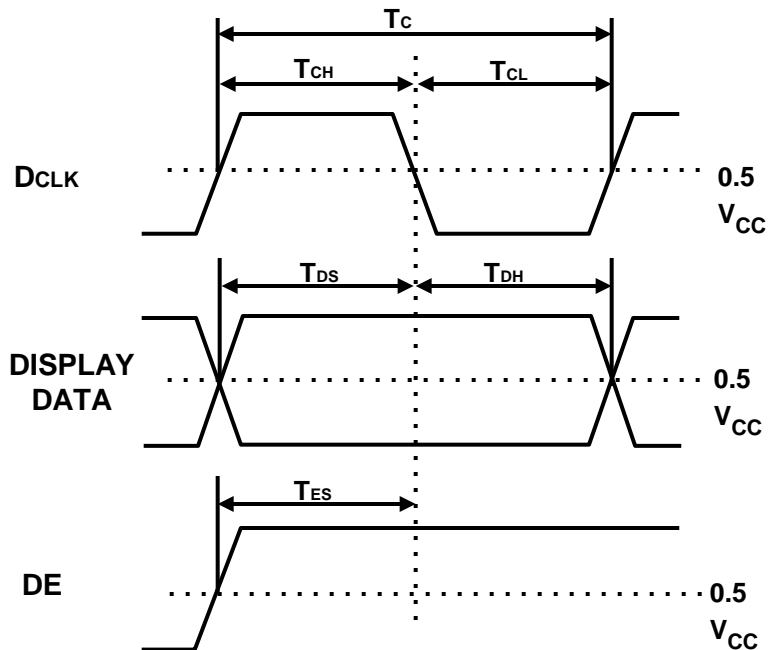
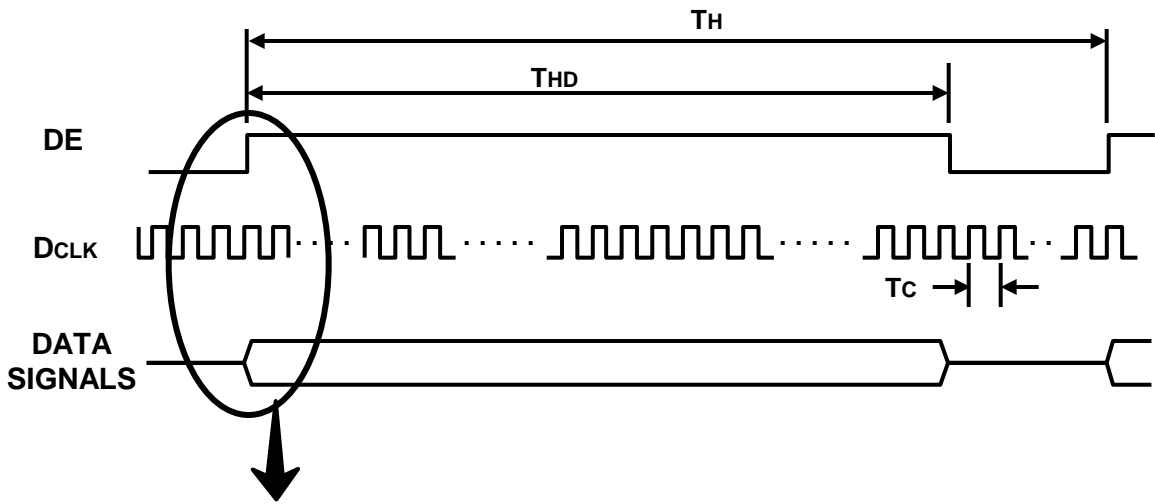
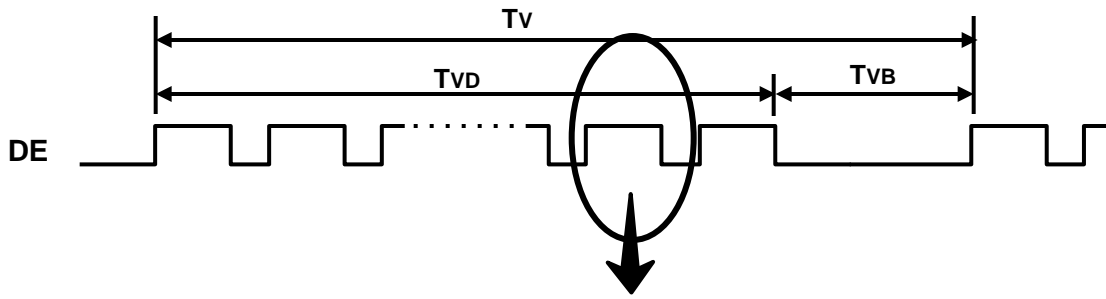
6. Interface Timing

6.1 Timing Parameters (DE only mode)

Signal	Item	Symbol	Min.	Typ.	Max.	Unit	Note
Clock	Frequency	$1/T_C$	130	148.5	155	MHz	-
Hsync		F_H	50	67.5	75	KHz	-
Vsync		F_V	-	60	-	Hz	-
Vertical Display Term	Active Display Period	T_{VD}	-	1080	-	Lines	-
	Vertical Total	T_V	1090	1125	1380	Lines	-
Horizontal Display Term	Active Display Period	T_{HD}	-	1920	-	Clocks	-
	Horizontal Total	T_H	2090	2200	2350	Clocks	-

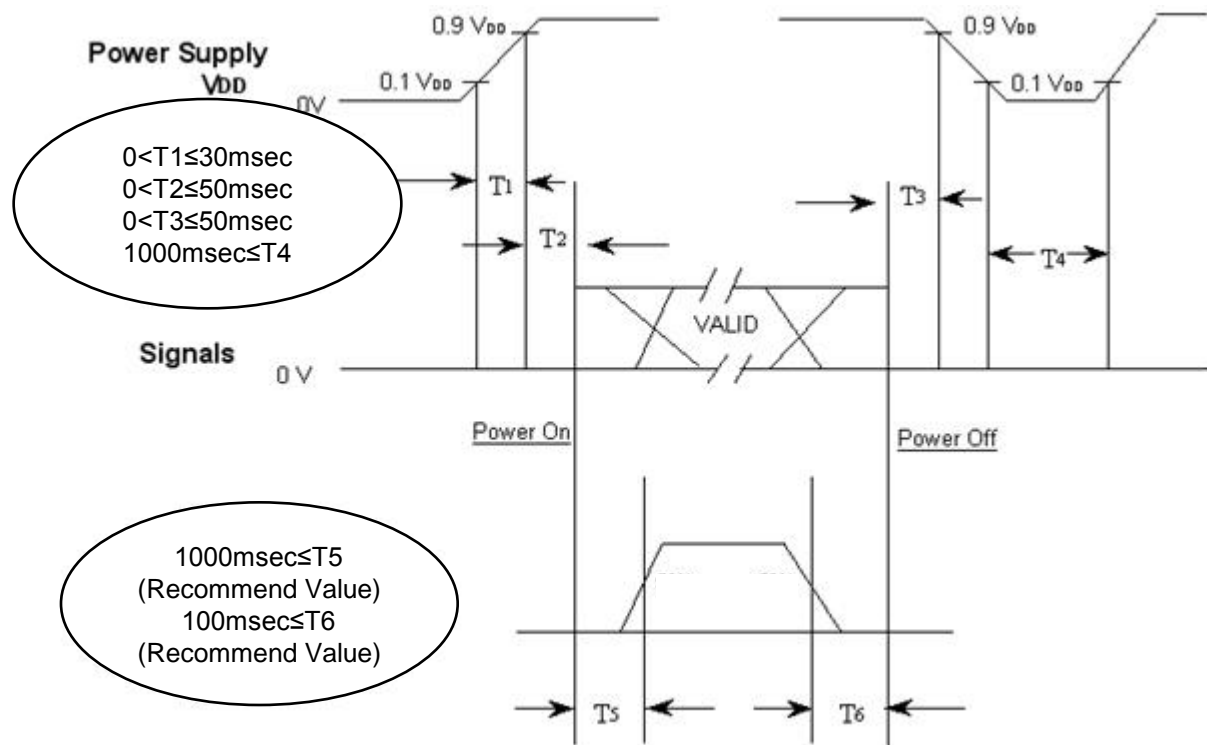
Note) This product is DE mode. And, the input of Hsync & Vsync signal does not have an effect on normal operation.

6.2 Timing diagrams of interface signal (DE only mode)



6.3 Power ON/OFF Sequence

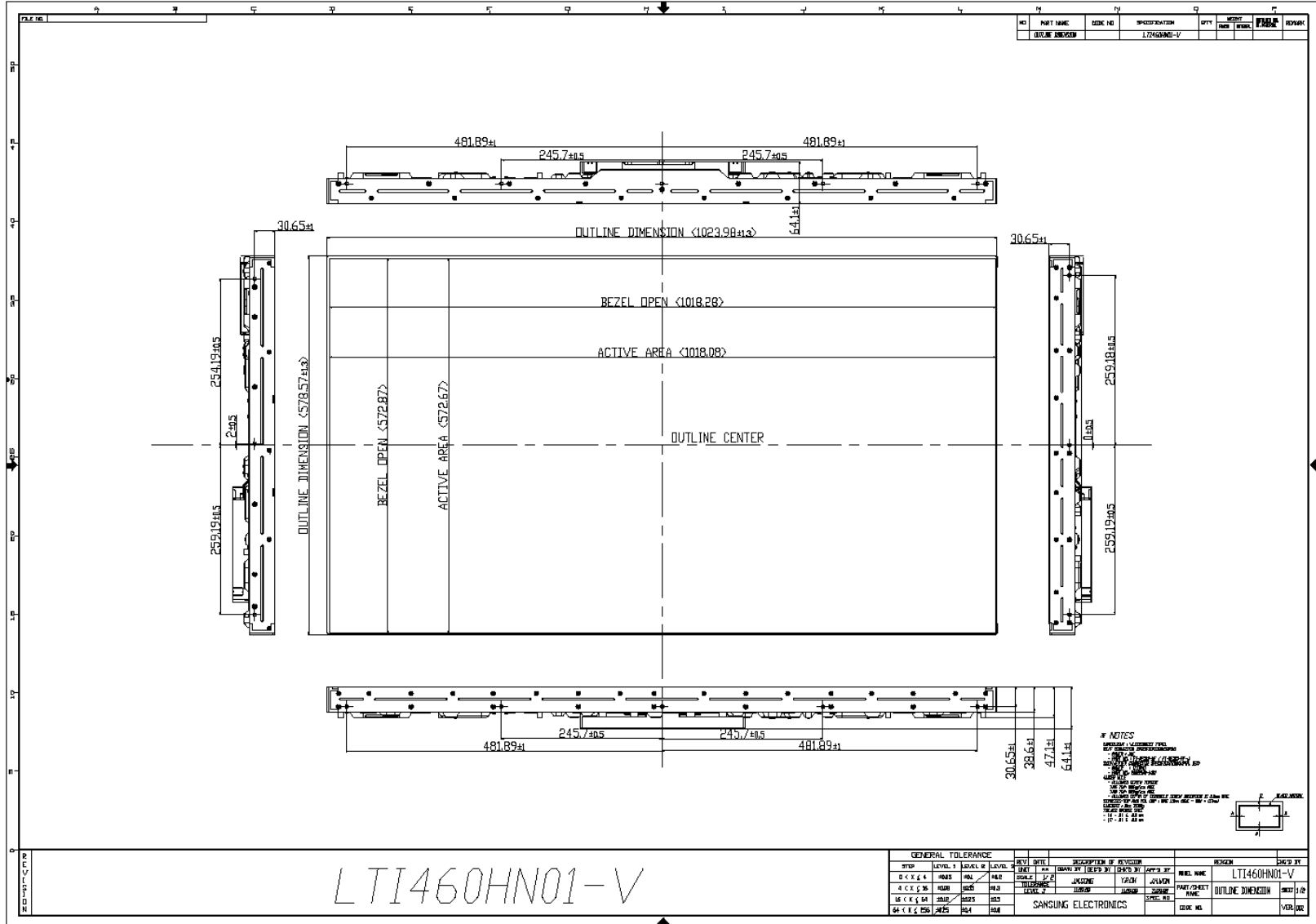
To prevent a latch-up or DC operation of the LCD Module, the power on/off sequence should be as the diagram below.



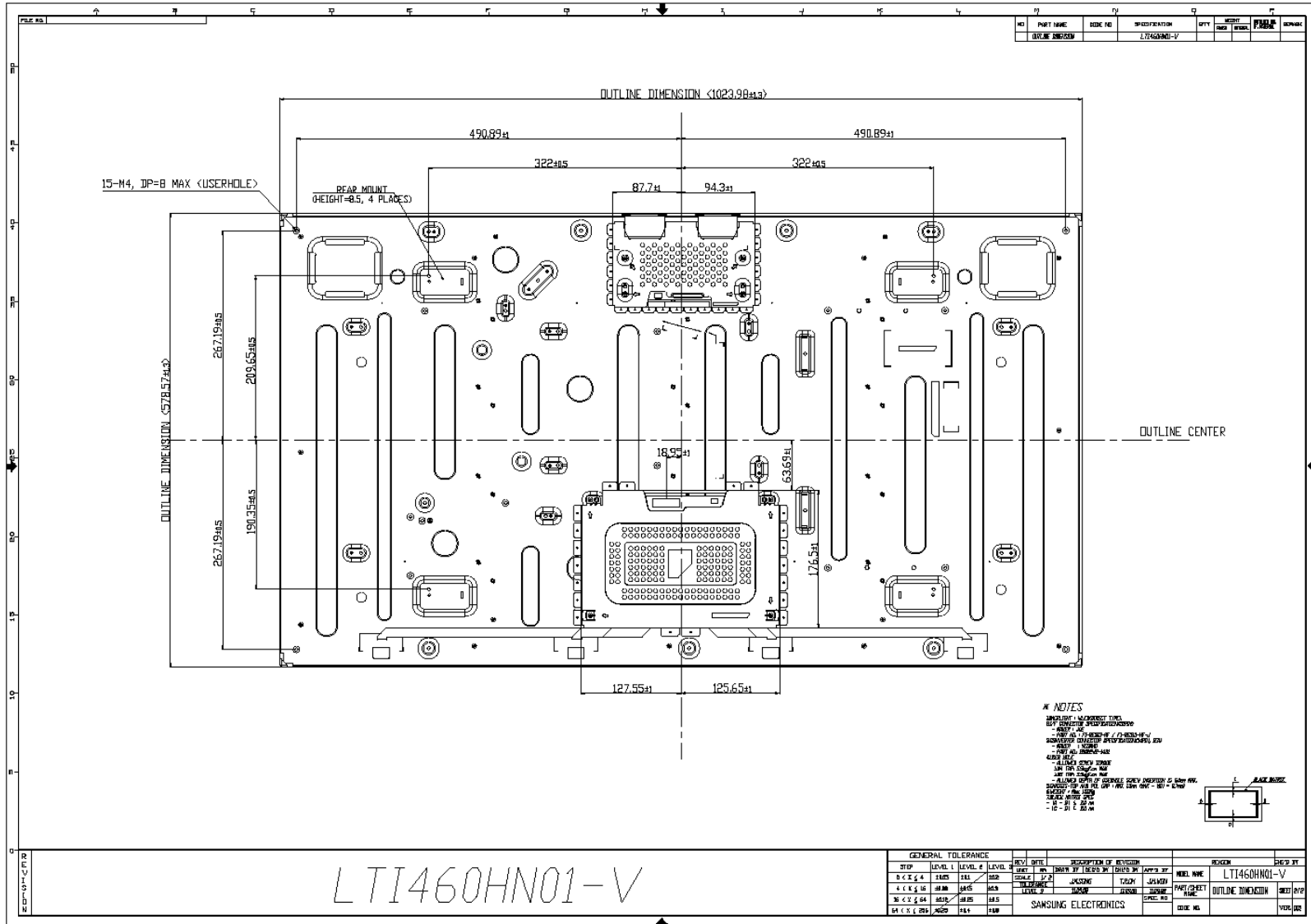
- T1 : V_{DD} rising time from 10% to 90%
- T2 : The time from V_{DD} to valid data at power ON.
- T3 : The time from valid data off to V_{DD} off at power Off.
- T4 : V_{DD} off time for Windows restart
- T5 : The time from valid data to B/L enable at power ON.
- T6 : The time from valid data off to B/L disable at power Off.

- The supply voltage of the external system for the Module input should be the same as the definition of V_{DD}.
- Apply the lamp voltage within the LCD operation range. When the back light turns on before the LCD operation or the LCD turns off before the back light turns off, the display may momentarily show abnormal screen.
- In case of V_{DD} = off level, please keep the level of input signals low or keep a high impedance.
- T4 should be measured after the Module has been fully discharged between power off and on period.
- Interface signal should not be kept at high impedance when the power is on.

7. Outline Dimension (Front View)



7. Outline Dimension (Rear View)



8. Reliability Test

Item	Test condition	Quantity
HTOL	50℃, 500hr determination	8EA
LTOL	0℃, 500hr determination	4EA
HTS	60℃, 500hr determination	4EA
LTS	-25℃, 500hr determination	4EA
THB	50℃ / 80%RH, 500hr determination	4EA
WHTS	60℃ / 75%RH, 500hr determination	4EA
T/S	-20 ~ 60℃, Dwell time : 30Min, 100cycle	4EA
TSS	-20 ~ 50℃, 220cycle	4EA
Image sticking	50℃, Mosaic pattern (9X10)	4EA
Contact ESD	± 10 kV ,150pF/330Ω, 210Point, 1 time/Point	3EA
Air ESD	± 20 kV, 150pF/100Ω, 210Point, 1 time/Point	3EA
Input Con. ESD	± 15kV, 150pF/330, Input Con.Pin, 3 times/Pin	3EA
Dust	6.6 ~ 8.6um, 5sec spray, 5min sedimentation / 10hr, Power 10min on, 10min off	2EA
Pallet Vibration → Pallet Drop	JIS 8types(6.6 ~ 8.6um), Carbon black(20nm) 4g, 5sec spray, 5min sedimentation / 10hr, Power 10min on, 10min off	1Pallet
Altitude	-40~50℃, 0m(0ft)~13,700m(45,000ft), 72.5Hr	4EA
Twist	10°, 0.7s/times, 1000times	4EA

※ SEC doe not guarantee Vibration and Shock test due to SNB model's feature.

[Result Evaluation Criteria]

Under the display quality test conditions with normal operation state, these should be no change which may affect practical display functions.

* HTOL/ LTOL : High/Low Temperature Operating Life

** THB : Temperature Humidity Bias

*** HTS/LTS : High/Low Temperature Storage

**** WHTS : Wet High Temperature Storage

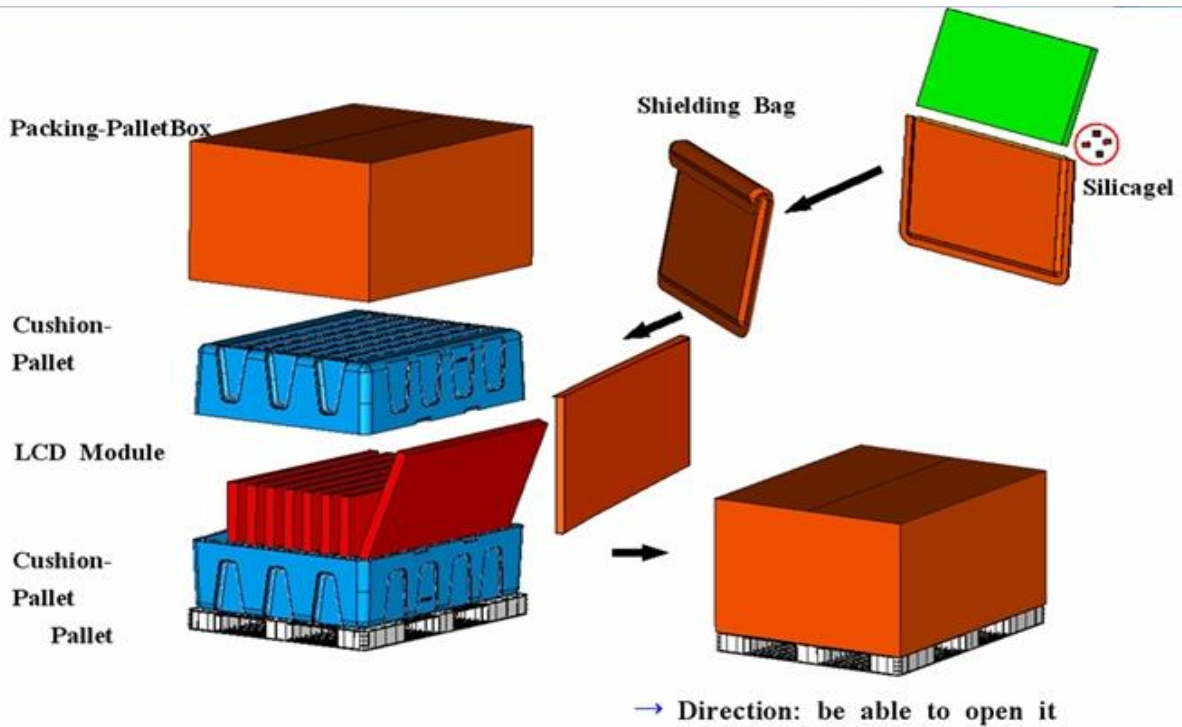
9. PACKING

9.1 CARTON (Internal Package)

(1) Packing Form

Corrugated fiberboard box and corrugated cardboard as shock absorber

(2) Packing Method



9.2 Packing Specification

Item	Specification	Remark
LCD Packing	8ea / (Packing-Pallet Box)	1. 15kg / LCD (8ea) 2. 8.0Kg / Cushion-Pallet (2ea) 3. 10.5 Kg / Packing-Pallet Box (1ea) >. Cushion-Pallet Material : EPS >. Packing-Pallet Box Material : DW4
Pallet	1Box / Pallet	1. Pallet weight = 8kg
Packing Direction	Vertical	
Total Pallet Size	H x V x height	1250mm(H) x 1130mm(V) x 690mm(height)
Total Pallet Weight	154.5kg	Pallet(8kg) + Module(15*8=120kg) + Cushion (8*2=16kg) + Pallet BOX(10.5kg)

9.3 Packing Storage condition

ITEM	Unit	Min.	Max.
Storage Temperature	(°C)	5	40
Storage Humidity	(%rH)	35	75
Storage life	12 months		
Storage Condition	<ul style="list-style-type: none"> - The storage room should provide good ventilation and temperature control. - Products should not be placed on the floor, but on the Pallet away from a wall. - Prevent products from direct sunlight, moisture nor water; Be cautious of a build up of condensation. - Avoid other hazardous environment while storing goods. - If products delivered or kept in conditions of over the storage period of 3 months, the recommended temperature or humidity range, we recommend you leave them at a temperature of 20°C and a humidity of 50% for 24 hours. 		

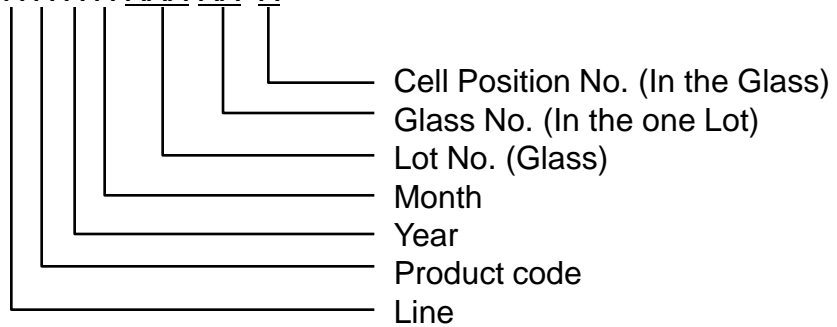
9.4 Packing long-term Storage guide

Long –term Storage Process	More than 3months Storage or Low temp. Delivery/under 5°C Storage → On the 20°C 50%rH Condition, More than 10hrs release.
----------------------------	--

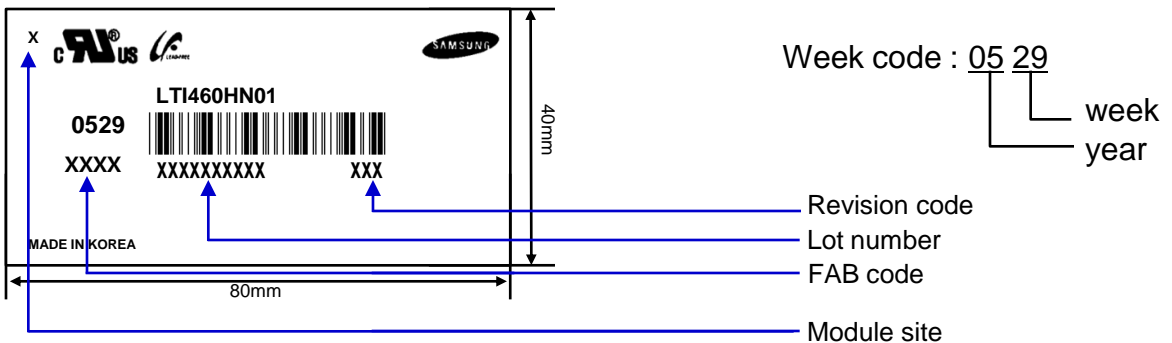
10. MARKING & OTHERS

A nameplate bearing followed by is affixed to a shipped product at the specified location on each product.

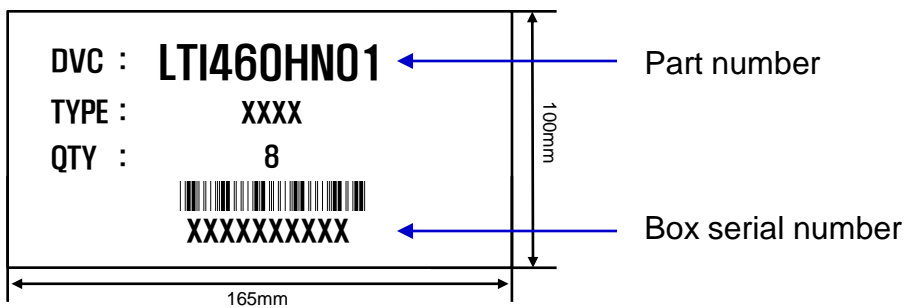
- (1) Part number : LTI460HN01
- (2) Revision: One letters
- (3) Lot number : X X X X XXX XX X



(4) Nameplate Indication



(5) Packing box attach



11. General Precautions

11.1 Handling

- (a) When the Module is assembled, it should be attached to the system firmly using all mounting holes. Be careful not to twist and bend the Module.
- (b) Because the inverter use high voltage, it should be disconnected from power before it is assembled or disassembled.
- (c) Refrain from strong mechanical shock and / or any force to the Module.
In addition to damage, this may cause improper operation or damage to the Module and CCFT back light.
- (d) Note that polarizers are very fragile and could be damage easily.
Do not press or scratch the surface harder than a HB pencil lead.
- (e) Wipe off water droplets or oil immediately. If you leave the droplets for a long time, staining or discoloration may occur.
- (f) If the surface of the polarizer is dirty, clean it using absorbent cotton or soft cloth.
- (g) Desirable cleaners are water, IPA(Isopropyl Alcohol) or Hexane.
Do not use Ketone type materials(ex. Acetone), Ethyl alcohol, Toluene, Ethyl acid or Methyl chloride. It might permanent damage to the polarizer due to chemical reaction.
- (h) If the liquid crystal material leaks from the panel, it should be kept away from the eyes or mouth . In case of contact with hands, legs or clothes, it must be washed away with soap thoroughly.
- (i) Protect the Module from static, or the CMOS Gate Array IC would be damaged.
- (j) Use finger-stalls with soft gloves in order to keep display clean during the incoming inspection and assembly process.
- (k) Do not disassemble the Module.
- (l) Do not pull or fold the lamp wire.
- (m) Do not adjust the variable resistor located on the Module.
- (n) Protection film for polarizer on the Module should be slowly peeled off just before use so that the electrostatic charge can be minimized.
- (o) Pins of I/F connector should not be touched directly with bare hands.

11.2 Storage

- (a) Do not leave the Module in high temperature, and high humidity for a long time. It is highly recommended to store the Module with temperature from 0 to 35 °C and relative humidity of less than 70%.
- (b) Do not store the TFT-LCD Module in direct sunlight.
- (c) The Module should be stored in a dark place. It is prohibited to apply sunlight or fluorescent light in storing.

11.3 Operation

- (a) Do not connect or disconnect the Module in the "Power On" condition.
- (b) Power supply should always be turned on/off by the "Power on/off sequence"
- (c) Module has high frequency circuits. Sufficient suppression to the electromagnetic interference should be done by system manufacturers.
Grounding and shielding methods may be important to minimize the interference.
- (d) The cable between the back light connector and its inverter power supply should be connected directly with a minimized length. A longer cable between the back light and the inverter may cause lower luminance of lamp(CCFT) and may require higher startup voltage(Vs).

11.4 Operation Condition Guide

- (a) The LCD product should be operated under normal conditions.
Normal condition is defined as below;
 - Temperature : 20 ± 15 °C
 - Humidity : 55 ± 20 %
 - Display pattern : continually changing pattern (Not stationary)
- (b) If the product will be used in extreme conditions such as high temperature, humidity, display patterns or operation time etc., It is strongly recommended to contact SEC for Application engineering advice. Otherwise, its reliability and function may not be guaranteed. Extreme conditions are commonly found at Airports, Transit Stations, Banks, Stock market, and Controlling systems.

11.5 Others

- (a) Ultra-violet ray filter is necessary for outdoor operation.
- (b) Avoid condensation of water. It may result in improper operation or disconnection of electrode.
- (c) Do not exceed the absolute maximum rating value. (supply voltage variation, input voltage variation, variation in part contents and environmental temperature, and so on)
Otherwise the Module may be damaged.
- (d) If the Module keeps displaying the same pattern for a long period of time, the image may be "sticked" to the screen.
To avoid image sticking, it is recommended to use a screen saver.
- (e) This Module has its circuitry PCB's on the rear side and should be handled carefully in order not to be stressed.
- (f) Please contact SEC in advance when you display the same pattern for a long time.